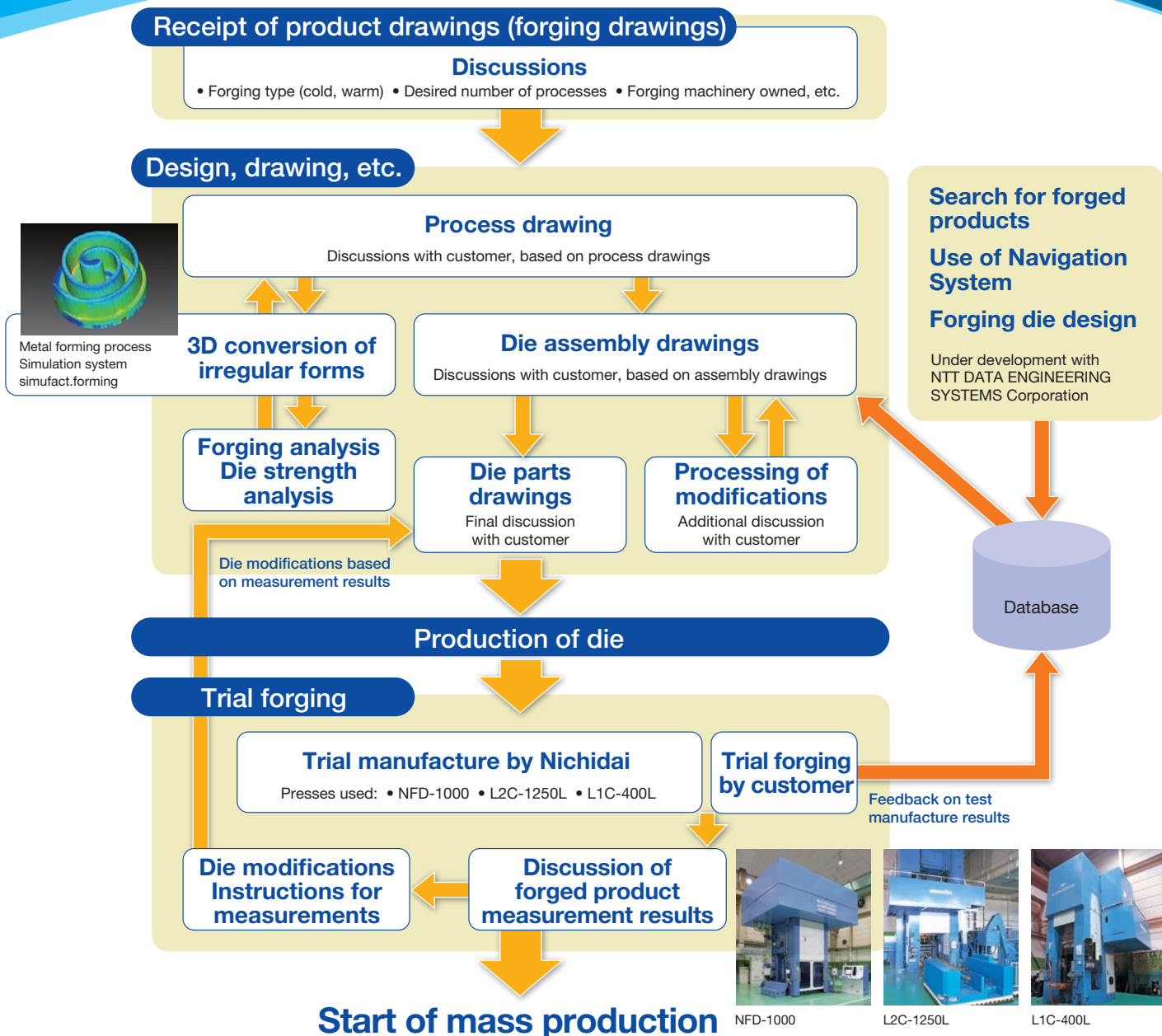


Total Engineering Systems



Nichidai offers customers support for precision forged products, beginning with process design. We also meet customers' requests for outsourced prototyping of precision forged products as well as startup and spot production, and provide precision forging technology and development support.



In addition to die manufacture and sales, Nichidai supports customers' product development through partnership and offers precision forging technology that spans development to mass production.

With the latest development support systems, we support total engineering systems.

CAE Environment

Nichidai has introduced the latest CAE software. We also respond to requests for analyses of all types.

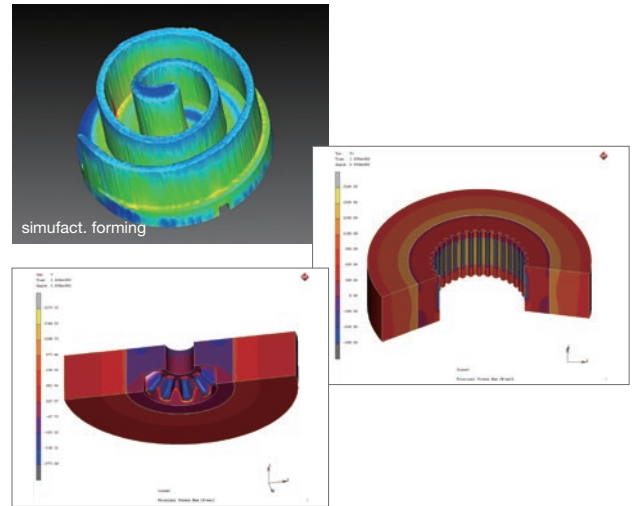
2D forging and die analysis system

This system helps estimate die strength and die life based on such data as the stress concentration of the die radius, the stress distribution of the entire die and the state of deformation.

3D forging and die analysis system

This system performs 3D simulation of load and deformation of bevel gears, spiders, clutch gears, and other non-axisymmetric products, which are not easily handled by 2D forging analysis systems. This allows collection of more practical data.

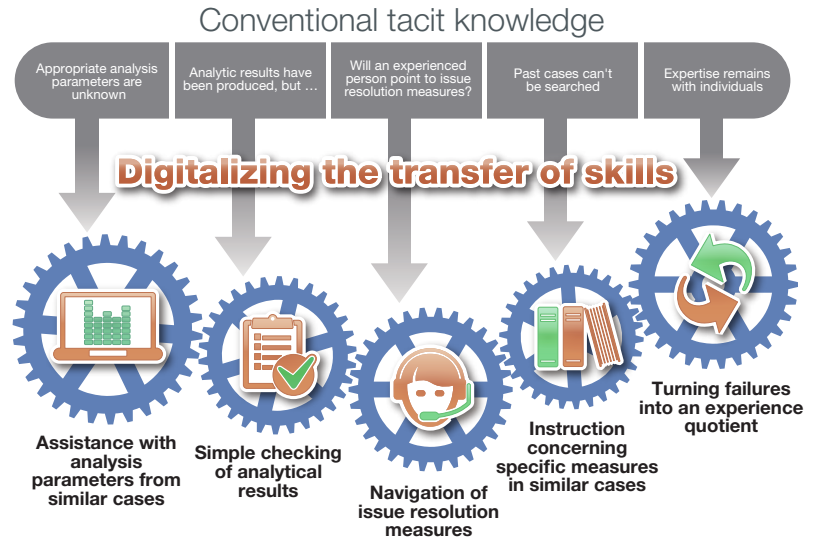
Dedicated forging software: simufact. forming



Navigation System for Forging Die Designs

Nichidai is developing Navigation System for forging die designs, combining its own precision forging technology and the CAE technology of NTT DATA ENGINEERING SYSTEMS Corporation.

- Conversion of design technology for precision forging, conventionally accumulated as tacit knowledge, into explicit knowledge.
- An effective tool for increased efficiency in the transfer of skills to young engineers, and fast launch of overseas businesses.



Head Office
13 Kitamachida, Takigi, Kyotanabe, Kyoto 610-0341
TEL.81-774-62-3481 FAX.81-774-62-3469

Ujitawara Factory
14 Shiotani, Zenjyoji, Ujitawara-cho, Tsuzuki-gun, Kyoto 610-0201
TEL.81-774-88-6311 FAX.81-774-88-6321

Kumagaya Office
2-88 Sakuragi-cho, Kumagaya, Saitama 360-0036
TEL.81-48-526-7381 FAX.81-48-526-7412

Hamamatsu Office
1F 3-12-3 Takaoka-Nishi, Naka-ku, Hamamatsu, Shizuoka 433-8118
TEL.81-53-430-0761 FAX.81-53-438-1288

Nagoya Office
1F 2-127 Takayashiro, Meito-ku, Nagoya, Aichi 465-0095
TEL.81-52-726-9805 FAX.81-52-726-9803

Kyoto Office
14 Shiotani, Zenjyoji, Ujitawara-cho, Tsuzuki-gun, Kyoto 610-0201
TEL.81-774-88-6311 FAX.81-774-88-6321

Okayama Office
TCK Bldg., 22-103 Tatsumi, Kita-ku, Okayama, Okayama 700-0976
TEL.81-86-244-6660 FAX.81-86-244-6663

Kumamoto Office
1-1-7, Nagamine-Minami, Higashi-ku, Kumamoto, Kumamoto 861-8039
TEL.81-96-387-6551 FAX.81-96-387-6552

NICHIDAI U.S.A. CORPORATION
15630 E State Route 12 Unit 4, Findlay, OH, 45840-9743, USA
TEL.1-419-423-7511 FAX.1-419-423-7512

NICHIDAI ASIA CO., LTD.
Amata Nakorn Industrial Estate Phase B, 700/882 Moo 5, Tb. Nhongkakha Ap. Phanthong Chonburi 20160, Thailand
TEL.66-38-185-080-1 FAX.66-38-185-079

(Sales Agent)
SHANGHAI JUMBO CORPORATION
2-1202, 388 ZhongJiang Road, Shanghai 200062, China
TEL.86-21-6238-5073 FAX.86-21-5239-9260

NNF CORPORATION
ASC Bldg. 65-14, 1gongdan-ro 6-gil, Gumi-si, Gyeongbuk 730-906 Korea
TEL.82-54-461-1718 FAX.82-54-461-1719



NICHIDAI CORPORATION
The best partner in precision forming technology

URL: <http://www.nichidai.jp/>
Mail: eigyou@nichidai.co.jp

For more information, please contact:
Sales Division

TEL: 0774-88-6350